

# PARKSIDE MONTESSORI ASSURANCE NEWS



## BACKGROUND

Each year, parents of students in grades 4, 5, and 6 receive a survey from Alberta Education in the mail. These surveys are to be completed online using the random-access code provided directly to parents and are anonymous.

The information we receive from the Alberta Education Assurance survey is extremely important for accountability in the delivery of education and builds assurance that schools are moving in the right direction. This information assists our school specifically in planning our priorities, strategies, and selecting evidence for our three-year education plan.

The survey asks for feedback from students, parents, and teachers on various aspects of quality instruction; student outcomes such as dropout and high school completion rates; and includes provincial assessments of student learning.

Students in grades 4, 5 and 6 from Parkside and all teachers will be completing their surveys online at school this spring.

Every few weeks for the remainder of the year we will update you on a different section from the survey and our efforts as a school community to support maintaining and increasing our achievement. It is our hope that providing this information will assist our parents in feeling confident in responding to the survey in the spring.



## 2023 HIGHLIGHTS

- 96% of teachers, parents and students agree that students are engaged in their learning
- 97% of teachers, parents and students are satisfied that students model the characteristics of active citizenship
- 99% of teachers, parents, and students are satisfied with the overall quality of basic education
- 98% of teachers, parents and students agree that their learning environments are welcoming, caring, respectful and safe
- 93% of teachers, and parents are satisfied with parental involvement in decisions about their child's education.



# JANUARY ASSURANCE HIGHLIGHT

*There are 9 specific areas looked at within the Provincial Assurance Survey. We will highlight one area in each edition. For January, the focus is sharing how our school community supports students.*



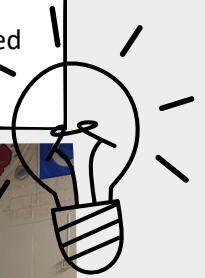
## STUDENT SUPPORT

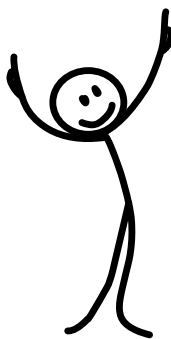
### In Learning

- Providing a holistic approach to learning through Montessori philosophy and teaching where presentations align with students' developmental level and support learning.
- Consistent school-wide year plan that identifies Social Emotional Learning concepts which are integrated into classroom instruction to build student understanding and develop skills
- Supporting our students with individualized instruction appropriate to their developmental level in all subject areas
- Students' personal and cultural strengths are incorporated into teaching and learning
- Student curiosity is encouraged and fostered in everyday learning
- Including parents in the development of specialized student programming plans (IPPs, AAPs, IBSPs)

### In School Culture And Extra Curricular

- Strong emphasis on building community connections
- PAX Kid of the Day
- Whole School events and activity days that promote connection and community (SEL Play Day, Colour Days, School Spirit Days, Jersey Day, Winter Fair, Brunch for Lunch, PJ Day, Silly Socks Day, etc.)
- Providing opportunities to experience sports, art, culture, STEM (Gr. 5/6 Division Triple Ball & Basketball tournaments, APEGA Science Olympics, choir, art gallery field trips, etc.)
- Community Kindness Week
- Collaborating with community partners to support Mental Health, Indigenous Learning, and access to other supports.

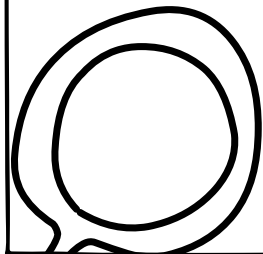




# STUDENT SUPPORT

## In School Planning

- Collaborative time for staff on Professional Learning Days to reflect on student learning and supports, evaluate evidence and implement changes in practice to meet student needs.
- Prioritized planning in cooperation with School Admin, Learning Support Teacher and the Multi-Disciplinary Team (MDT) to support student needs with classroom observations, assessments, strategies, program planning, and mental health counselling.
- Engaging our School Council and greater school community in building understanding of school priorities



## In Literacy and Numeracy

- Teachers providing small group instruction in Literacy and Numeracy
- Targeted small group Literacy & Numeracy Intervention.
- Early learners are provided with opportunities to build foundational skills in Literacy and Numeracy
- Cross-graded Reading Buddies to help both emerging & experienced readers develop their skills
- Weekly Home Reading program to support young readers
- Providing Parent Learning Sessions in Literacy and Numeracy to help build understanding of the ways families can support learning at home
- Providing access and instruction for students on specialized programming to supports such as speech-to-text, Reader Pens, iPads, calculators, graphic organizers, scribes, and more.

